

Project 2: Precedent Project

Obasi Akamnonu

Spring 2022 ARC 376

Architectural Design III, Professor LoPiccolo



Doo Jip House

- Location
 - South Korea
- Architect
 - Archihood WXY
- Building Type
 - Residential, Multi-family
- Square Footage
 - 4,058 sqft
- Year Built
 - 2019



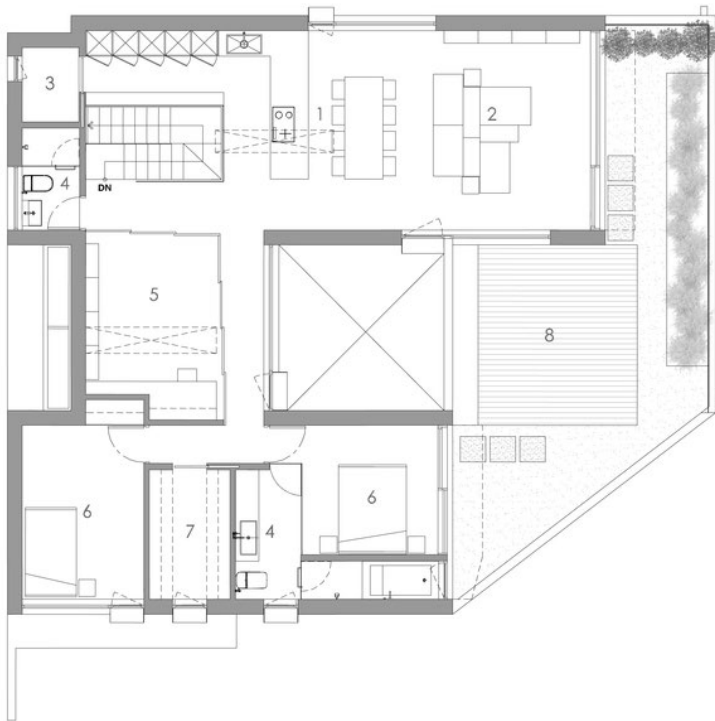


Views



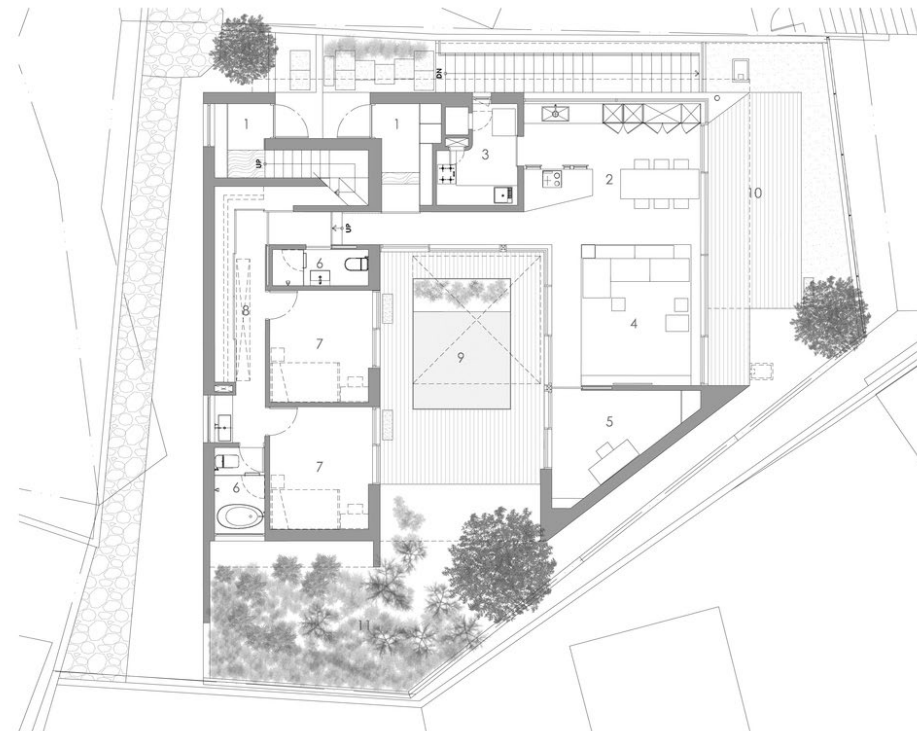
Interior Views

Floor Plans



FLOOR PLAN

1 kitchen/diningroom 2 livingroom 3 utilityroom 4 bathroom
5 studio 6 bedroom 7 dressroom 8 terrace



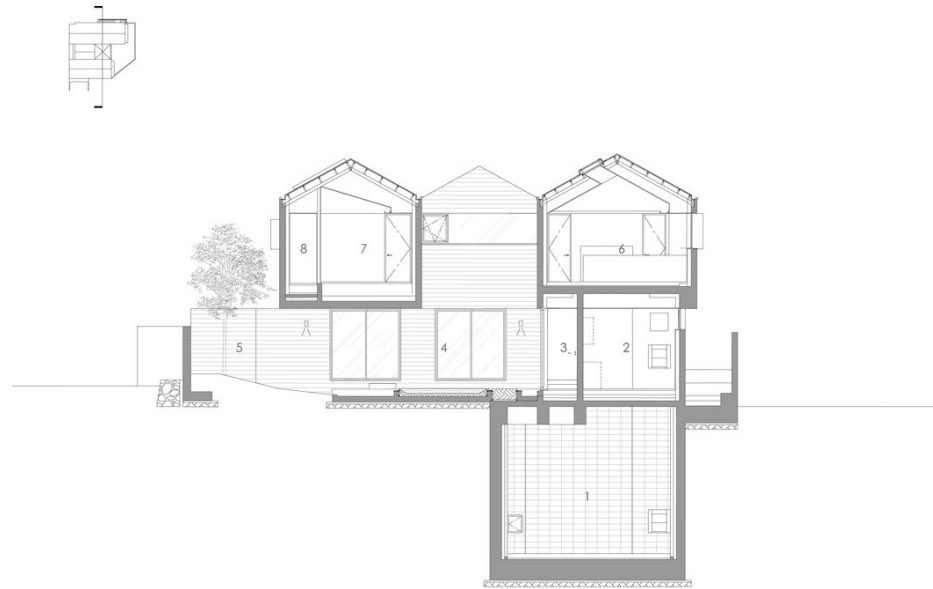
FLOOR PLAN

1 entrance 2 kitchen/diningroom 3 subkitchen 4 livingroom 5 hobbyroom
6 bathroom 7 bedroom 8 dressroom 9 courtyard 10 terrace 11 garden



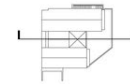
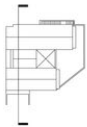


Sections



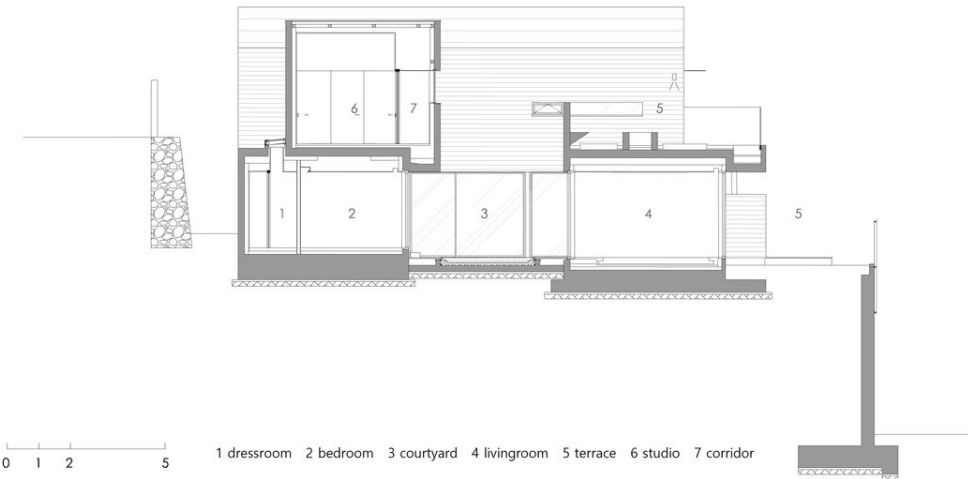
0 1 2 5

1 garage 2 subkitchen 3 corridor 4 courtyard 5 garden
6 kitchen/diningroom 7 bedroom 8 bathroom



1 corridor 2 bathroom 3 bedroom 4 kitchen 5 studio 6 garden

0 1 2 5



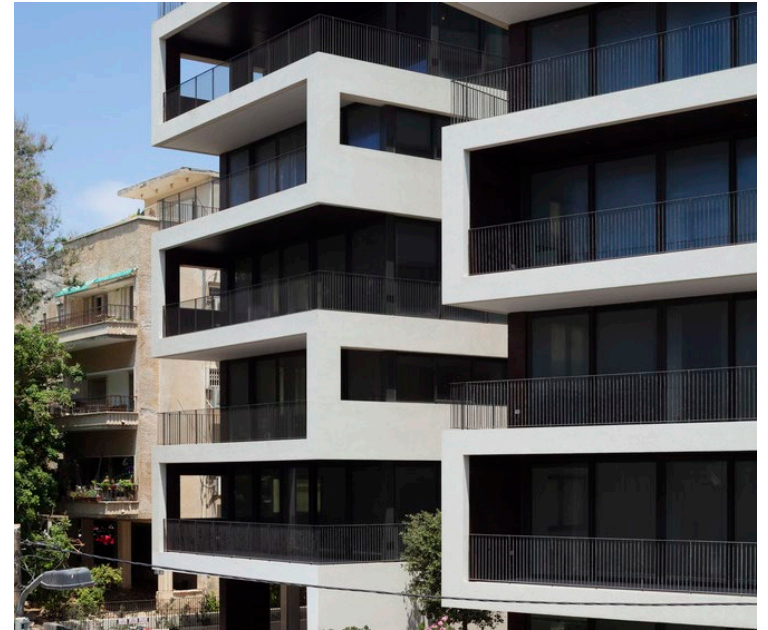
1 dressroom 2 bedroom 3 courtyard 4 livingroom 5 terrace 6 studio 7 corridor

0 1 2 5



Mapu 5 Residential Building

- Location
 - Isreal
- Architect
 - Bar Orian Architects
- Building Type
 - Residential, Multi-family
- Square Footage
 - 78.576.55 sqft
- Year Built
 - 2022

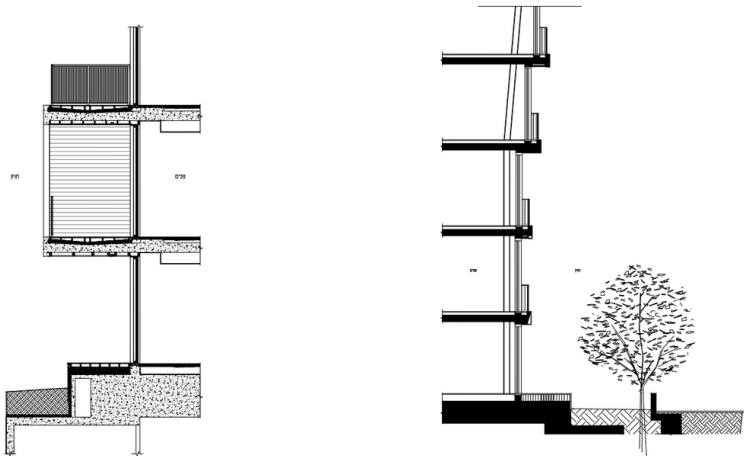


Views

Interior View



Floor Plans & Section Plan



The background image shows a modern multi-story apartment building, Yushima House, at dusk. The building has a light-colored facade with numerous windows, many of which are illuminated from within, creating a warm glow. The building's design is characterized by its angular, stepped form and a mix of window sizes. To the right, another building with a darker facade and a glass-enclosed section is visible. The sky is a deep blue, and the overall scene is captured in a cinematic style. A large, semi-transparent white circle is overlaid on the left side of the image, containing the title and project details.

Yushima House

- Location
 - Japan
- Architect
 - OSTR
- Building Type
 - Residential, Apartment Multi-Unit Housing
- Square Footage
 - 742.71 sqft
- Year Built
 - 2020



Views

Interior Views

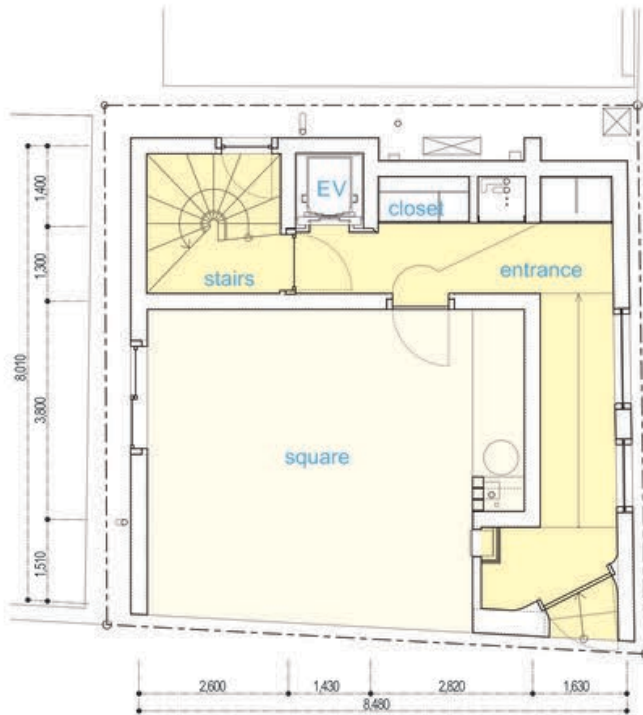




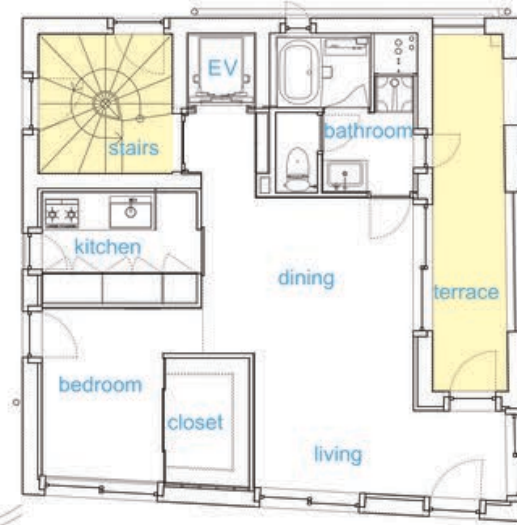
◆ 4FL



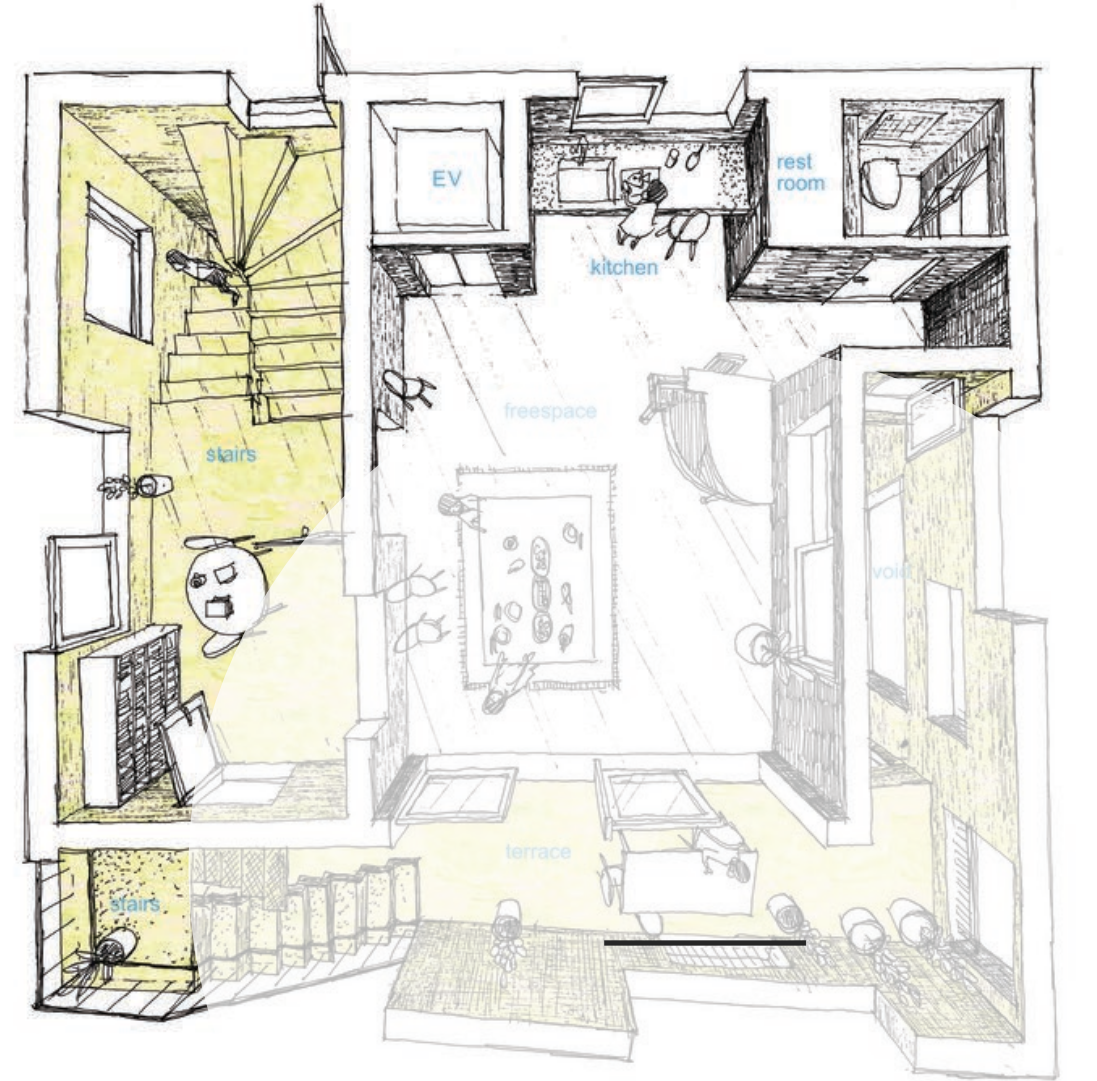
◆ 5FL



◆ 1FL



◆ 2FL



◆ 3FL

Floor Plans

Section Plan

